

Holdowns for CFS Construction

HTT14S / LTS20B

The **LTS20B** and **HTT14S** holdowns are designed for attachment to cold formed steel (CFS) framing members. Holdowns are secured at the base by attachment to an anchor bolt.

LTS20B is a light capacity holddown with a 1/4" load transfer plate.

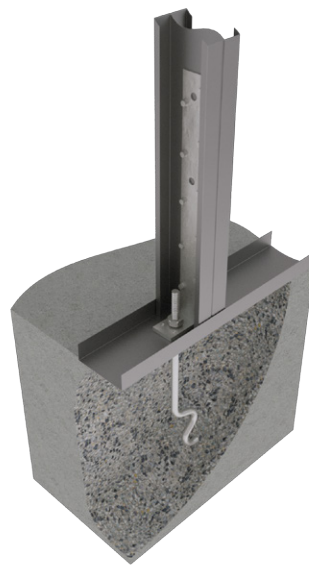
HTT14S is a medium capacity single-piece, 3-ply base, formed holddown.

Materials: See chart

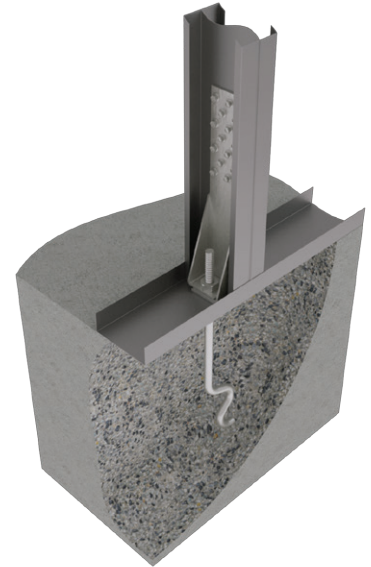
Finish: G90 galvanizing

Installation:

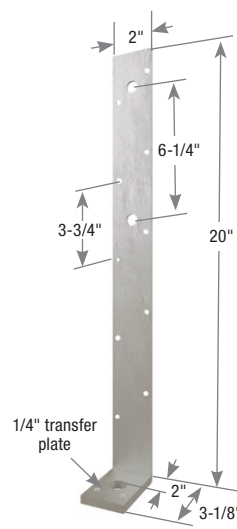
- Use #10 self-tapping screws to attach the back or strap portion of the holddown to a steel stud. Install nut to secure the base of holddown to foundation with anchor bolt of specified diameter.
- A design professional shall specify the type, length, and embedment depth of the anchor bolt.
- Install anchor bolt nut to base of holddown until finger tight, then tighten an additional 1/3 to 1/2 turns with a wrench.



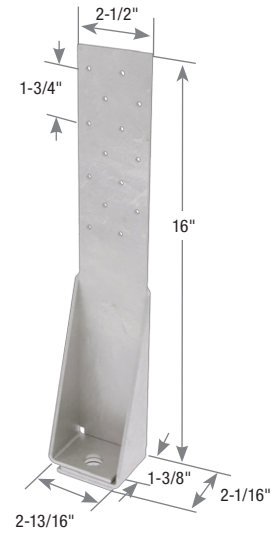
Typical LTS20B installation



Typical HTT14S installation



LTS20B



HTT14S

USP Stock No.	Ref. No.	Steel Thickness		Fastener Schedule				Allowable Tension Loads (Lbs.) ^{1,2,4}						Ctn Qty
		Strap Gauge	Base (in)	To Sill Plate		To Stud		2-33 mil (2-20ga) Back-to-Back Studs		2-43 mil (2-18ga) Back-to-Back Studs		2-54 mil (2-16ga) Back-to-Back Studs		
				Anchor Bolt ³	Screws ^{5,6}	100%	160%	100%	160%	100%	160%			
LTS20B	S/LTT20	12	1/4	1	3/4	5	#10	885	1140	1090	1090	1210	1210	10
HTT14S	S/HTT14	10	--	1	5/8	14	#10	2480	3290	3680	4425	4825	4825	

- 1) Back-to-back stud members are required unless otherwise noted.
- 2) The allowable loads at 160% can only be used with codes that permit the use of alternate basic load combinations and when the referenced materials standard permits it.
- 3) Designer shall specify anchor embedment and configuration.
- 4) Designer shall verify the adequacy of the steel studs to transfer the required load.
- 5) Self-tapping screws shall be in compliance with ASTM C1513.
- 6) #10 self-tapping screws shall have a minimum diameter of 0.190" and length of 0.75".